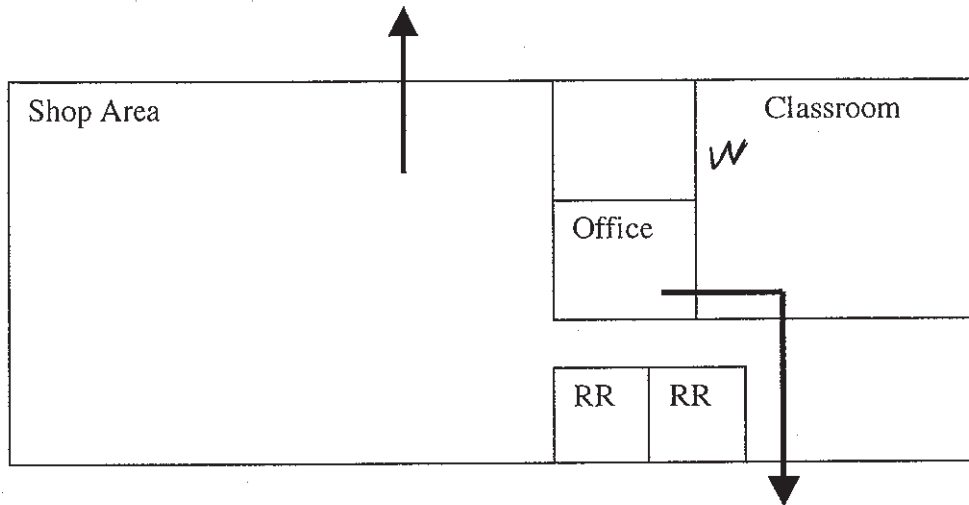


Emergency Fire Evacuation Routes for the Ag. Shop



Office, Classroom

Exit the areas through the front doors and meet across the street.

Shop

Exit the shop through the back door and meet at the garage next to the shop.

1. Exit the rooms following the escape routes. If routes are blocked by either smoke or flames, alternate routes will need to be found. Close doors upon evacuating the rooms.
2. Take roll and immediately alert administration if a student is missing. Staff members should not return to the building to find missing students.
3. Staff and students should remain in "safe zones" until an all clear signal is given or evacuation plans are made by administrative personnel.